



- ▶ Quartz Stability
- ▶ Ideal for Satellite Receiver
- ▶ RoHS Compliant



ECS-D480A

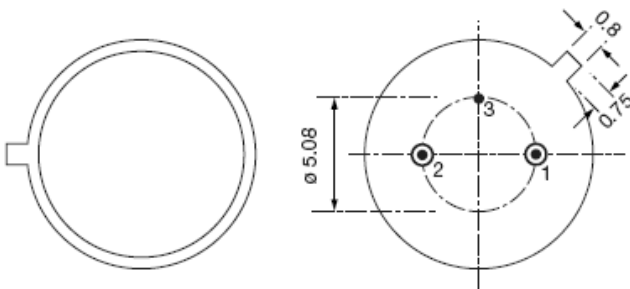
SAW FILTER

The ECS-D480A is a 480 MHz SAW (Surface Acoustic Wave) Filter in a thru-hole TO39-3A package. They are ideal for Satellite TV.

OPERATING CONDITIONS / ELECTRICAL CHARACTERISTICS

| PARAMETERS | CONDITIONS | ECS-D480A | | | UNITS |
|-----------------------|-------------------|-------------|-------|-------|--------|
| | | MIN | TYP | MAX | |
| CENTER FREQUENCY | | 479.0 | 480.0 | 481.0 | MHz |
| INSERTION LOSS | @ FO | | 19.5 | 21 | dB |
| 3 dB PASS BAND | | 16.6 | 17.6 | 18.6 | MHz |
| RELATIVE ATTENUATION | @ 471.0 MHz | | 3.4 | 5.4 | dB |
| | @ 489.0 MHz | | 3.0 | 5.4 | dB |
| | 430 ~ 461 MHz | 38.0 | 50.0 | | dB |
| | 499 ~ 530 MHz | 38.0 | 45.0 | | dB |
| AMPLITUDE RIPPLE | 476.0 ~ 484.0 MHz | | 0.3 | 0.6 | dB |
| GROUP DELAY | 480.0 MHz | | 281.0 | | nS |
| GROUP DELAY RIPPLE | 471.5 ~ 488.5 MHz | | 11.5 | 18.0 | nS |
| FREQUENCY STABILITY | -25°C ~ +85°C | | -86 | | PPM/°C |
| TERMINATING IMPEDANCE | INPUT | 70Ω//3.7pF | | | |
| | OUTPUT | 280Ω//2.5pF | | | |
| OPERATING TEMPERATURE | | -25 | | +85 | °C |
| STORAGE TEMPERATURE | | -40 | | +85 | °C |

PACKAGE DIMENSIONS (mm)



| PIN CONNECTIONS | |
|-----------------|--------|
| 1 | INPUT |
| 2 | OUTPUT |
| 3 | GROUND |

PART NUMBER: ECS - D480A